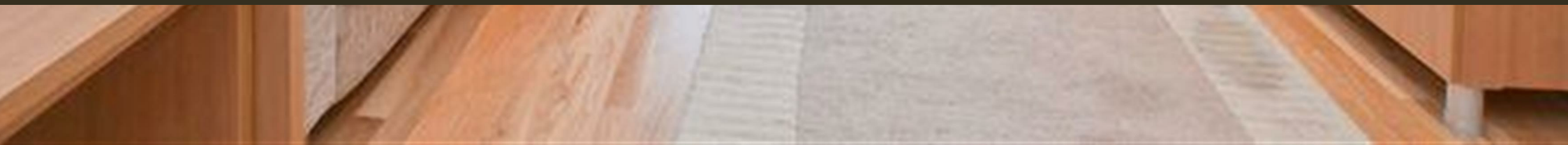




197 Long Lane, Borough
London SE1

GARTONJONES.COM



197 Long Lane, Borough
London, SE1

GARTON JONES.COM

9 Albert
Embankment
London
SE1 7SP

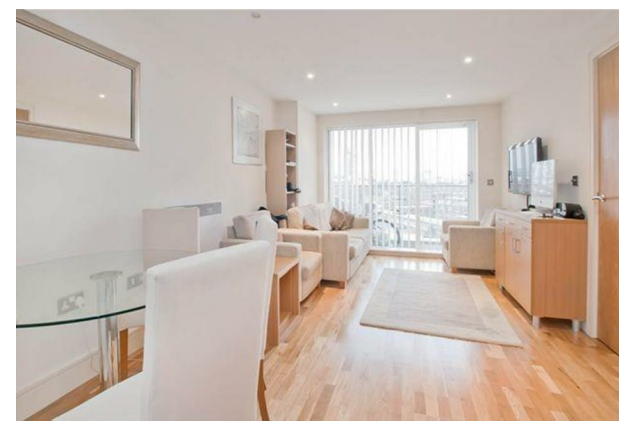
Lettings:
+44 (0) 20 7735 1888
nineelms@gartonjones.com
www.gartonjones.com

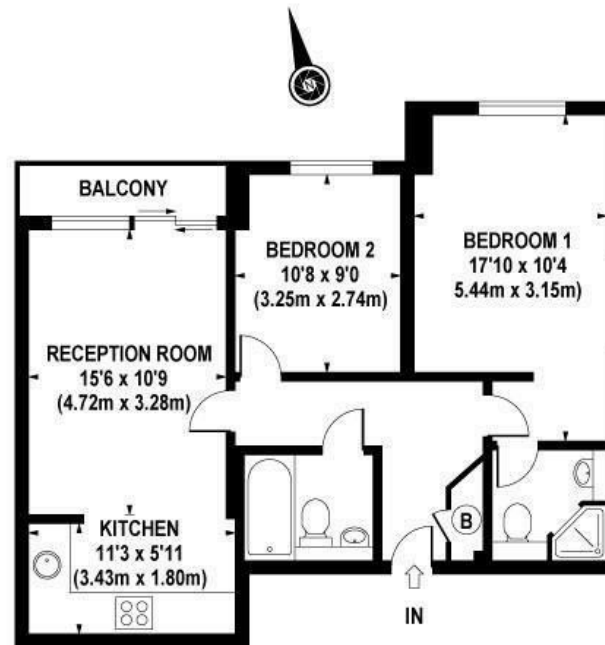
£577 Per Week

A well located 2-bedroom apartment of 701sq.ft (65sq.m) available to rent at 197 Long Lane, a popular residential development located a short walk from Borough Station. This modern property has a spacious open plan reception room with floor to ceiling windows, a fully fitted kitchen with access to a balcony with views looking out towards The Shard, 2 contemporary bathrooms (1 en-suite) and additionally, there are wooden floors and good storage. The development has an on-site convenience store, and you are located within easy reach of further amenities and the rail/tube links of both London Bridge and Borough. Bermondsey Street and Tower Bridge Road are also on your doorstep benefitting from independent coffee shops, restaurants, and bars all a short walk away.

Southwark Council Tax Band D - £1,692.92 per annum
12 Month Minimum Term
5 Week Security Deposit

- 2 Bedrooms
- 701sq.ft (65sq.m)
- 2 Bathrooms (1 En-Suite)
- Open Plan Reception
- Modern Fitted Kitchen
- Lift Access
- Balcony
- Views Towards The Shard
- Cafes, Bars & Restaurants Located at Bermondsey Street
- 0.4 Miles from Borough Station





APPROX. GROSS INTERNAL AREA 701 sq.ft / 65.12 sq.m

COMPLIANT WITH RICS CODE OF MEASURING PRACTICE Floorplan is for illustrative purposes only and is not to scale. Every attempt has been made to ensure the accuracy of the floorplan shown, however all measurements, fixtures, fittings and data shown are an approximate interpretation for illustrative purposes only. Liability for errors, omissions or mis-statement through negligence or otherwise is hereby excluded.

